



**L U X E**  
**T E C H**



## **LUXETECH C-B**

Pixel Pitch: 1.125/1.538/1.1667/1.86/2/2.5/3.076

### **FINE PITCH LED DISPLAY**

Luxetech C-B is the new generation fine pitch led display with the full front service functionality. It achieves the high quality visual performance at a relatively low cost, and its simple cabinet design makes for a lightweight, fast and flexible installation.

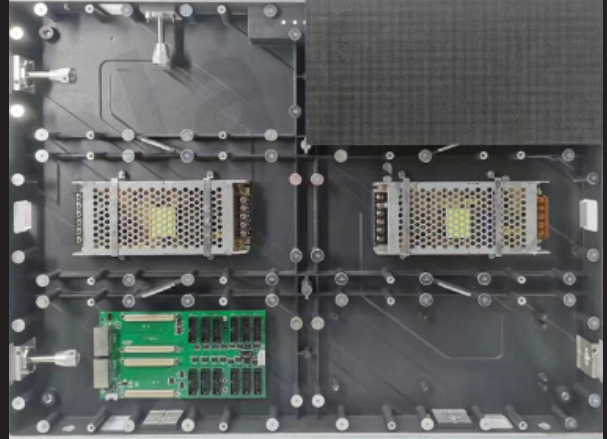
It is widely used for studios, shopping centre, conference venues, control centres and wall mounted projects.

## PRODUCT FEATURES

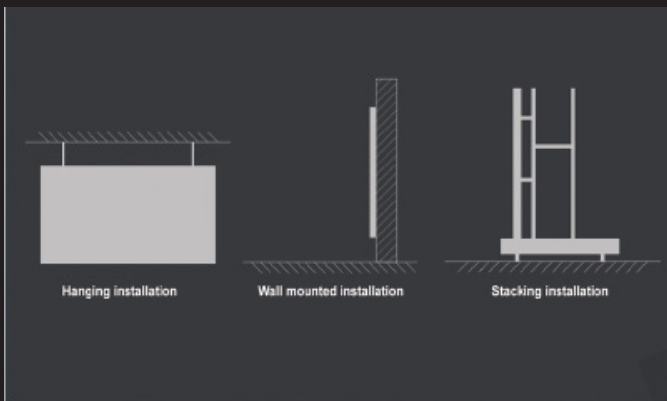
High definition, high refresh rate, high quality visual effect.



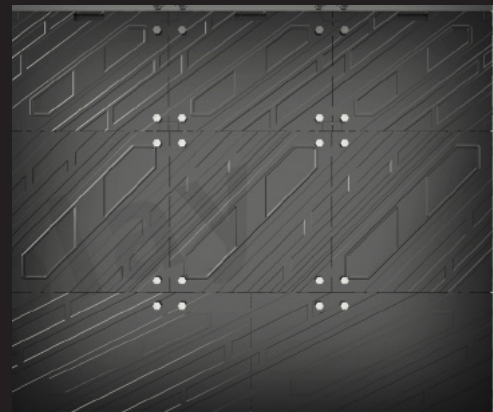
Full front maintenance. Module, power supply and receiving card a disassembled from the front



Multiple installation methods optional



Can realize different cabinet splicing and up and down dislocation. Available cabinet sizes 640x480mm/960x480mm/640x640mm/320x640mm



## SPECIFICATION

Pixel Pitch	1.25mm	1.538mm	1.667mm	1.86mm	2mm	2.5mm	3.076mm
LED Configuration	SMD1212	SMD1212	SMD1212	SMD1515	SMD1515	SMD2121	SMD2121
Pixel Density	640,000 Dots/m <sup>2</sup>	422,500 Dots/m <sup>2</sup>	360,000 Dots/m <sup>2</sup>	288,369 Dots/m <sup>2</sup>	250,000 Dots/m <sup>2</sup>	160,000 Dots/m <sup>2</sup>	105,625 Dots/m <sup>2</sup>
Module Size	320 x 160mm	320 x 160mm	320 x 160mm	320 x 160mm	320 x 160mm	320 x 160mm	320 x 160mm
Module Resolution	256x128dots	208x104dots	192x96dots	172x86dots	160x80dots	128x64dots	104x52dots
Panel Size	640x480x65mm						
Panel Resolution	512x384dots	416x312dots	384x288dots	344x258dots	320x240dots	256x192dots	208x156dots
Panel Weight	9kg	9kg	9kg	9kg	9kg	9kg	9kg
Max. Power Consumption	700 W/m <sup>2</sup>	700 W/m <sup>2</sup>	800 W/m <sup>2</sup>	800 W/m <sup>2</sup>	800 W/m <sup>2</sup>	800 W/m <sup>2</sup>	800 W/m <sup>2</sup>
Ave. Power Consumption	350 W/m <sup>2</sup>	350 W/m <sup>2</sup>	400 W/m <sup>2</sup>	400 W/m <sup>2</sup>	400 W/m <sup>2</sup>	400 W/m <sup>2</sup>	400 W/m <sup>2</sup>
Viewing Distance	>2m	>2m	>2m	>2m	>2m	>3m	>3m
IP Rating	IP30						
Brightness	500-800 nits						
Environment	INDOOR						
Viewing Angle (H/V)	140° / 140°						
Gray Scale	14 bits						
Refresh Rate	3840Hz						
Control Module	Synchronous Display with control PC by DVI						
Support Input	Composite, S-video, Component, VGA, DVI, HDMI, HD_SDI						
Operation Power	AC110~240V, 50/60Hz						
Environment	Temperature: 0°C~50°C, Humidity: 10%~90%						
Operating Life	>100,000 hours						